

# Automatic Mask Production Line

Fight Against the Virus, TESTEX Be with You



[Click to see the production videos on our website ...](#)

By Testex Instrument Ltd  
July, 2020

# Contents

- [TM120 Mask Bodies Making Machine](#)
- [AUW60 Automatic Ultrasonic Earloop Welding Machine](#)
- [MUW6 Manual Ultrasonic Earloop Welding Machine](#)
- [ECM Earloop Cutting Machine](#)
- [Mask Production Line Combo](#)
- [Mask Production Process Chartflow](#)
- [Production Line Layout](#)
- [Mask Raw Material Specifications & Consumption](#)
- [Why Choose Us?](#)

# TM120 Mask Bodies Making Machine

## Machine Introduction:

Automatic system to form 3 ply flat mask bodies, combine raw fabrics, three layers of pp non-woven, then form the creases, inserting nose clips and being weld together by ultrasonic welding device, finally cut into mask body pieces for next earloops welding procedure.



## Ultrasonic device warranty:

Ultrasonic welding controller: 2 years

Ultrasonic transducer: 1 year



## Specifications

- Model: TM120
- Capacity: 120+ pcs/min
- Power: 220 V 50 Hz 1 Kw
- Machine size: 2810 \* 640 \* 1410 mm (L x W x H)
- Machine weight: 351 Kg



## Packaging info.

- Package size: 2950 \* 760 \* 1560 mm (L x W X H)
- Package weight: 469 Kg

*Machine Appearance might change accordingly, please confirm with our sales in advance.*

# AUW60 Automatic Ultrasonic Earloop Welding Machine (With Automatic Mask Bodies Feeder)



## Machine Introduction:

Consists of 3 major parts, need one labor to put a pile of mask bodies to the feeding system, then the feeder system will distribute the mask body to the conveyor, then the welding device will finish the earloop welding automatically.

Feature in long-time stable running with idea capacity.

## Specifications

- Model: AUW60
- Capacity: 60+ pcs/min
- Power: 220 V 50 Hz 1.5 Kw
- Drive type: servo motors
- Air source: 0.4 ~ 0.7 MPa
- Machine size: 1950 \* 1050 \* 1630 mm (L x W x H)
- Machine weight: 311 Kg

## Packaging info.

- Package size: 1980 \* 1150 \* 1490 mm (L x W X H)
- Package weight: 427 Kg



## Ultrasonic device warranty:

Ultrasonic welding controller: 2 years

Ultrasonic transducer: 1 year

*Machine Appearance might change accordingly, please confirm with our sales in advance.*

# MUW6 Manual Ultrasonic Earloop Welding Machine



#1 With Desk



#2 Without Desk

|                          |                     |
|--------------------------|---------------------|
| Model                    | MUW6                |
| Capacity*                | 6 pcs/min           |
| Control Mode             | Foot peddle         |
| Machine Size (L x W x H) | 650 * 400 * 1000 mm |
| Weight (N.W)             | 30 Kg               |
| Power                    | 220 V 50 Hz         |

## Machine Introduction:

Used to weld the earloops to the mask body, with the operation of labor, after welding the 4 connect points, then get the final masks, numbers of the welding machine can be adjusted to match the full capacity of the mask body machine, one machine one labor.

**Note:** We recommend the #2 one without a desk, to save the shipping volume and cost, you can easily find a table locally.

*Note: Machine Appearance might change accordingly, please confirm with our sales in advance.*

*\*This is capacity of one set, we will quote you the total qty of this machine based on your demand.*

# ECM Earloop Cutting Machine



## Machine Introduction:

The rolled earloops are automatically cut to a specific length (18cm for universal mask size) for the next mask welding process.

|                              |                    |
|------------------------------|--------------------|
| Model                        | ECM                |
| Capacity                     | 120 ~ 240 pcs/min  |
| Feeding Speed                | 700 mm/s           |
| Max. Cutting Width           | 80 mm              |
| Machine Size<br>(L x W x H)  | 560 * 450 * 400 mm |
| Weight (N.W)<br>Weight (G.W) | 24 Kg<br>25 Kg     |
| Power                        | 500 W, 220 V 50 Hz |

*Note: Machine Appearance might change accordingly, please confirm with our sales in advance.*

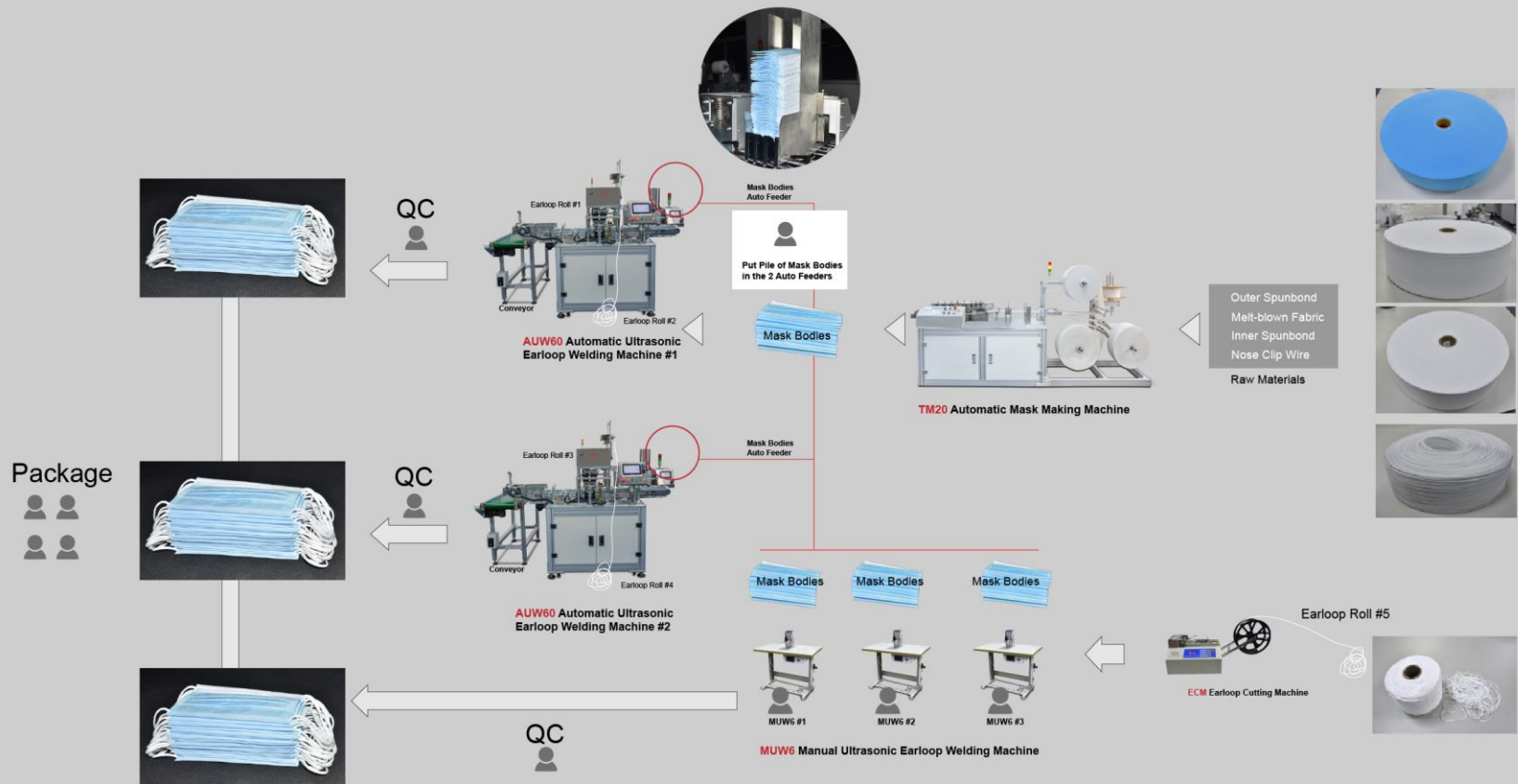
# Mask Production Line Combo

| Machine                                      | Model | Qty    | Capacity          | Total Output |
|--|-------|--------|-------------------|--------------|
| Automatic Mask Body Making Machine           | TM120 | 1 Set  | 120+ pcs/min      | 120+ pcs/min |
| Automatic Ultrasonic Earloop Welding Machine | AUW60 | 2 Sets | 60+ pcs/min/set   | 120+ pcs/min |
| Manual Ultrasonic Earloop Welding Machine*   | MUW6  | 3 Sets | 6 pcs/min/set     | 18 pcs/min   |
| Earloop Cutting Machine                      | ECM   | 1 Set  | 120 ~ 240 pcs/min | On demand    |

\*Note: The **MUW** is not only used as a support to **AUW**, but also a necessary tool to fix the masks which are not weld well by the **AUW**, to reduce the defect rate.

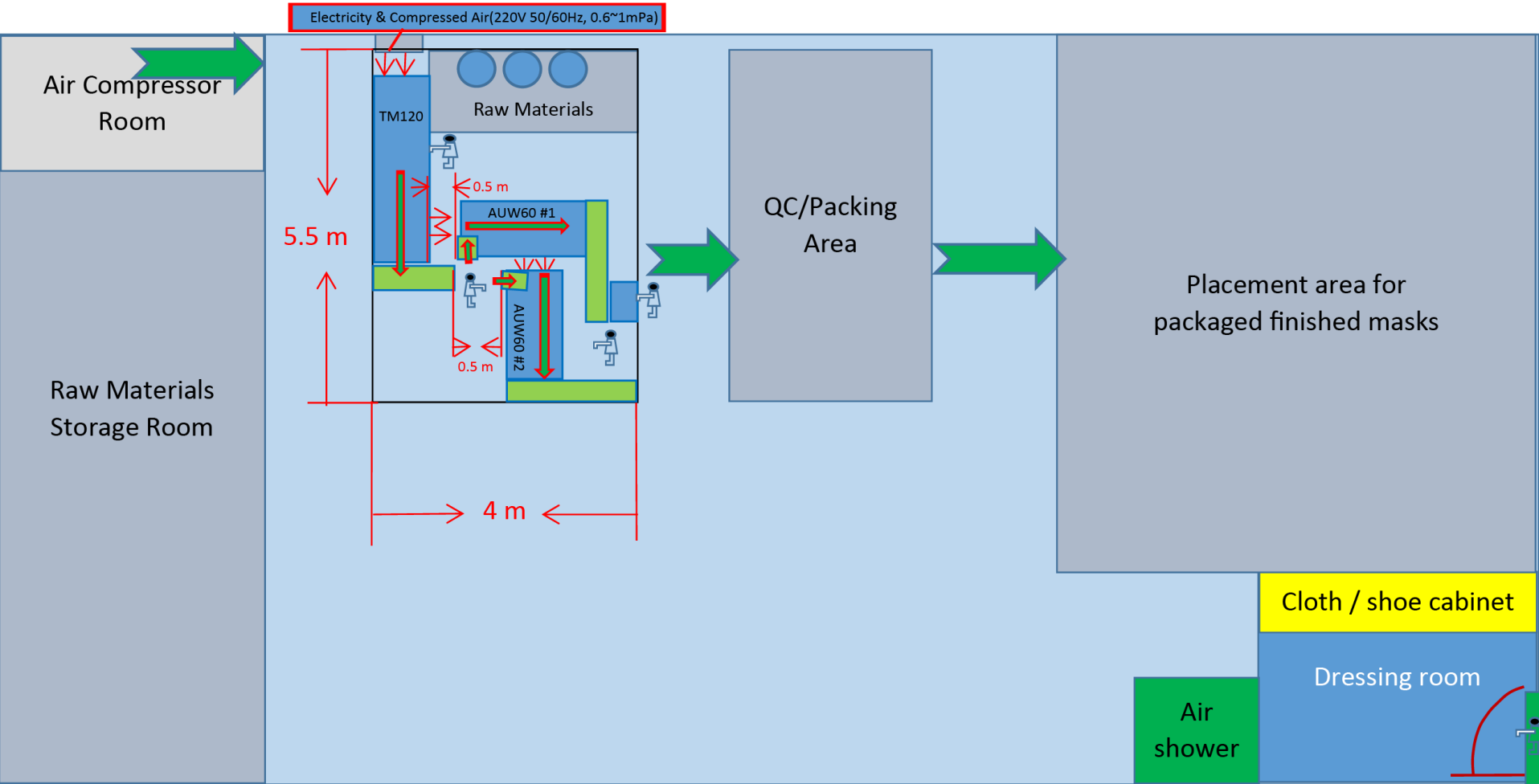
# Mask Production Process

## Mask Production Line: Machines, Labors, Materials

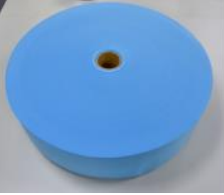

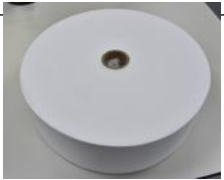
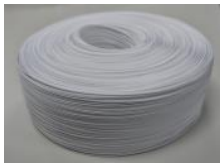





# Production Line Layout



## Disposable 3 Ply Mask Raw Material

|                    | Photo   | Color | GSM                 | Specifications                             | Length/<br>Mask | Weight<br>/Mask<br>(g) | 1 kg<br>material<br>can<br>produce<br>masks<br>(pcs) | 1 ton<br>material<br>can<br>produce<br>masks<br>(pcs) | How many<br>days 1 ton<br>material can<br>be used<br>(100k<br>pcs/day)<br>(days) | One day<br>material<br>consumption<br>(100k<br>pcs/day)<br>(kg) |
|--------------------|---|-------|---------------------|--|-----------------|------------------------|--|---|--|---|
| Outer<br>Spunbond  |    | Blue  | 25 g/m <sup>2</sup> | Width: 175 mm<br>7.2 kg/roll<br>Dia. 55 cm | 175 mm          | 0.81                   | 1235   | 1,234,568   | 12   | 81  |
| Meltblown          |    | White | 25 g/m <sup>2</sup> | Width: 175 mm<br>7.2 kg/roll<br>Dia. 55 cm | 175 mm          | 0.81                   | 1235   | 1,234,568   | 12   | 81  |
| Inner<br>Spunbond  |    | White | 25 g/m <sup>2</sup> | Width: 195 mm<br>8 kg/roll<br>Dia. 55 cm   | 175 mm          | 0.853                  | 1172   | 1,172,333   | 12   | 85.3  |
| Nose Clip<br>Wire  |   | White | Width<br>3.2 mm     | 350 m/kg                                   | 90 mm           | 0.26                   | 3889   | 3,888,889   | 39   | 26  |
| Elastic<br>Earloop |  | White | Dia.<br>3 mm        | 770 m/kg                                   | 195 x 2<br>mm   | 0.47                   | 1974   | 1,974,359   | 20   | 47.10   |

# Why Choose TESTEX?



**TESTEX (TESTEX INSTRUMENT LTD)** is a **national high-tech enterprise** and **SGS ISO certification** company that develops and manufactures testing instruments for textile laboratories. 90% of the TESTEX brand instruments are sold to Europe, America, and Asia. Customers include NASA, National laboratories such as the Naval Academy and university research institutes, as well as international inspection agencies such as ITS, SGS, etc., and automotive brands (interior textiles) such as Land Rover, and apparel brands NIKE, Under Armour, Uniqlo, etc.

There are more than 100 models of testing equipment developed and manufactured by TESTEX, covering the testing of the performance of various types of textiles and their properties, as well as testing equipment for epidemic prevention materials such as masks and protective clothing.

TESTEX has rich experience in the R&D, manufacturing, sales, after-sales training of equipment, and always takes the core value of “We endeavor to achieve our customers’ success, then achieve our staffs’ value, thus achieve our shareholders’ goals.”

## Mask Making Machine, Developed, Tested, Used by Ourselves

Quality and Service are the bottom line of us, quality concerns has helped us won our reputation in the textile testing instrument market since our foudation (2010).

When the epidemic is over, we may not produce the mask making machine again, but we hope that all customers who have choosed to buy mask machines from us, can know TESTEX's high demand for product quality, and our pursuit of quality has never changed.



